

Auto Modeler: Unload and Upload

Upload Options

General

Column A is the name of the Object Type

Subsequent columns represent the object's properties and associations.

Properties: Column headings must match exactly the name of the Property Type

Associations: Column headings must match exactly the name of the Association Type.

If there is more than one association to another object (e.g. we might have Organizations that own a Process and Organizations that execute a Process), then the association name (what you see in brackets – see example below) must also be included in the Column heading.

A specific example is when uploaded hierarchical relationships, e.g.

Function	Function (parent)
Name of Function	Name of its parent

If you do not include "parent", the associated Function could be loaded as a child.

If Objects do not exist, they are created

When you upload, whatever is column A is first matched with what exists in the repository; if there is no match, a new object instance is created.

The same goes for associated objects.

Beware that Casewise is case-sensitive, so if an object called "Recruit staff" already exists and your source Excel file has something called "Recruit Staff", you end up with two objects.

Replace \ Append \ Merge

TBC

Multiple associations: merge vs replace

The two tables below have the same result if you upload using Merge mapping, viz the Function object is associated to both XYZ and ABC (and are added to any existing associations)

Function	Physical Application Component	Physical Application Component
Name of Function	ABC	XYZ

Function	Physical Application Component
Name of Function	ABC XYZ

However, if you upload using Replace mapping, then:

In table 1, ABC replaces whatever already exists, while XYZ then replaces ABC. Result: the function is associated only to XYZ

In table 2, the contents of the cell replaces whatever already exists. Result: the function is

associated to ABC and XYZ (but not any previous associations).

Note however that you cannot use Replace mapping if any of those existing associations are shown as lines on a diagram, as replace involves deleting the association.

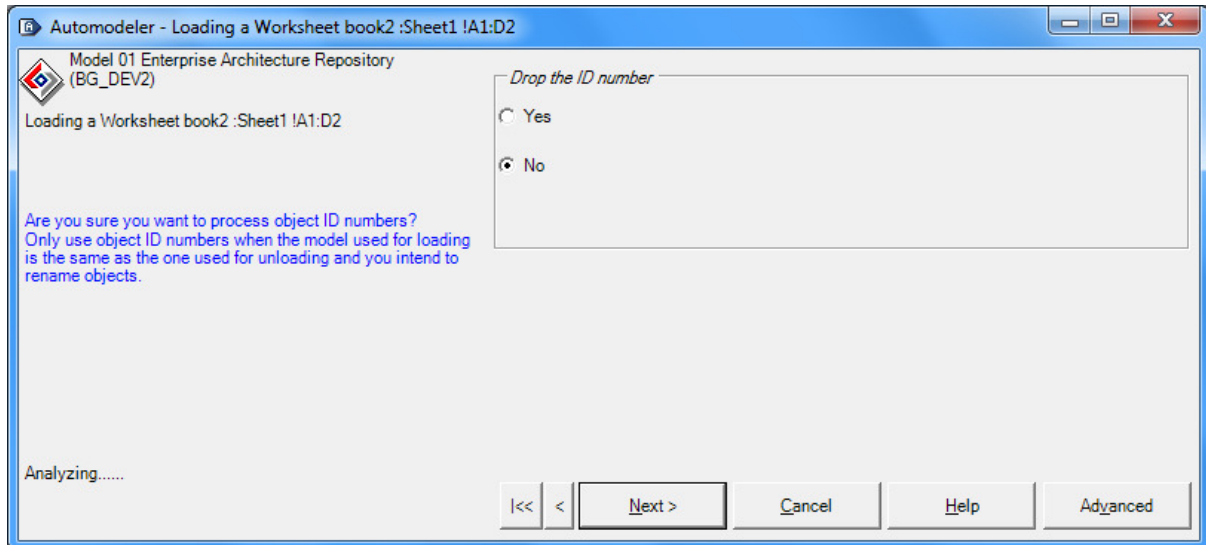
Delete Properties and Associations with the {empty} tag

TBC

Match by Id

The screen below is confusing. The question is not on the left, but above on the right panel: "Drop the Id number".

To match by Id therefore means you must choose No here.



You can also match by UUID.

If the UUID is present in your spreadsheet, it will always match by UUID – you get no prompt.

You cannot transfer UUIDs or IDs to other models

TBC

Mixed Object Types

You see this screen if the object names have a colon and a name that matches a Corporate Modeler object type. For example, the screen below was caused by:

Business Objects:GRC

Choose No – unless you are indeed loading mixed object types.

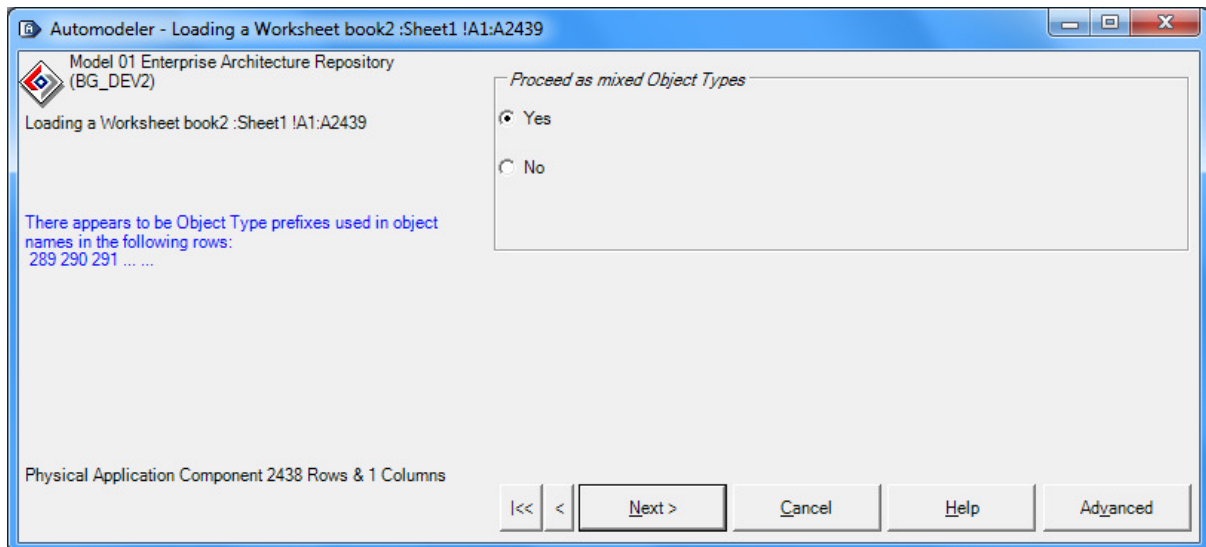


Diagram Properties

You cannot create new diagrams with Auto Modeler; therefore, diagrams must already exist and be unloaded first.

When downloading, these properties are selected by default – leave them selected as you cannot re-upload unless they are present:

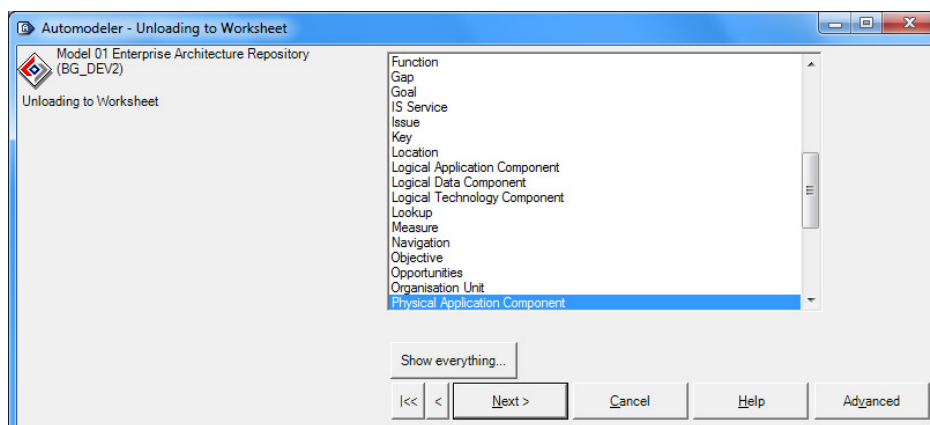
- Id
- Name
- Category
- Rule

Auto Modeler: Unload Options

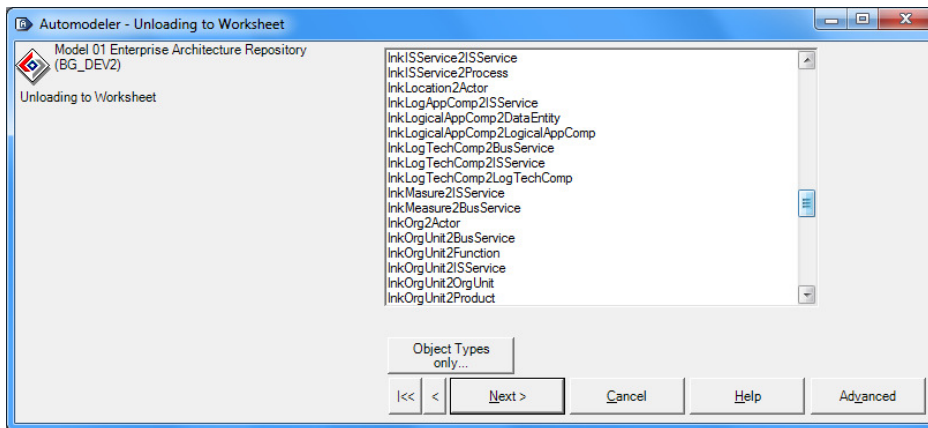
Objects \ Association Types

Select the Object Type you want to unload.

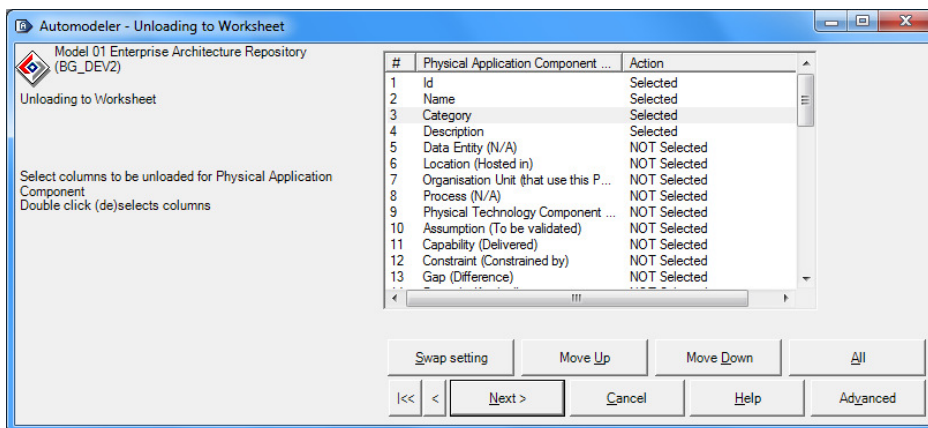
Click “Show Everything” to unload Intersection Object Properties (see figure 2)



The list now displays your Association Types. It is important to have a clear naming convention when setting these up.

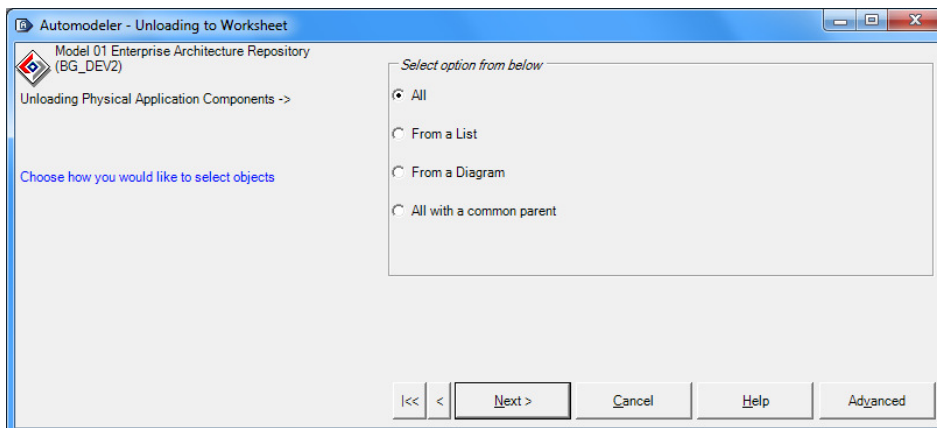


Properties and Associations



If you intend to change the name of an Object, unload the Id

Filters



All with a common parent filtered by any property type of data type "drop-down list" – e.g. category.

From a diagram allows you to insert Diagram Picture of downloading to Word.

Diagram Objects

If download to Word, you can include the Diagram Picture above the Objects' table.

Note, if you have mixed objects on the diagram, they are all in one table, but prefixed by the Object Type, so the table can be sorted by Object Type or split into two.

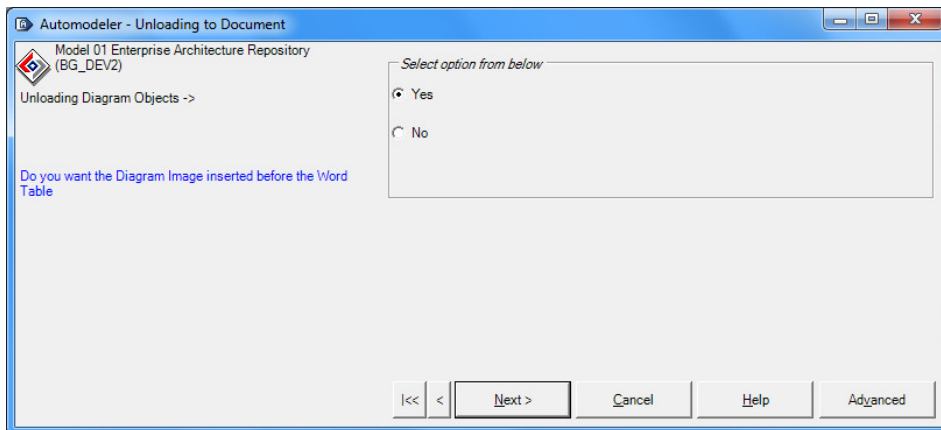


Diagram Objects option however allows only a limited set of properties:

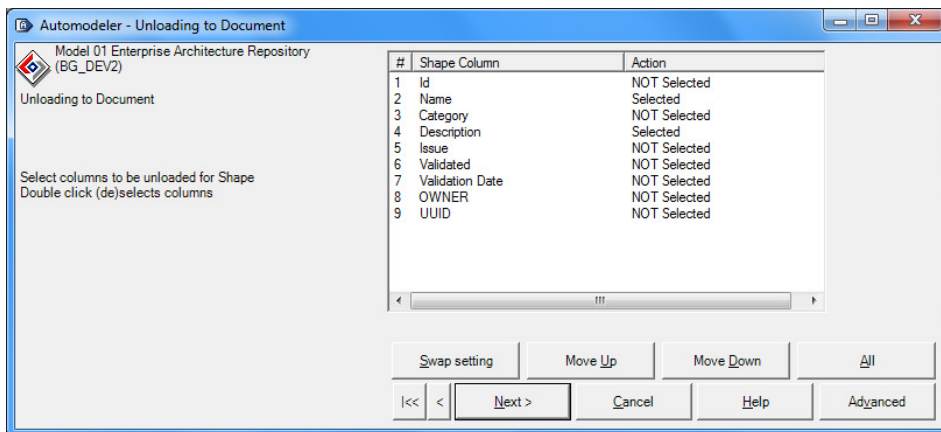


Diagram dependency information

Includes things like Connectors and Connector sets. If the diagram is a hierarchy diagram, it also gives you the option to download as an indented list. Note, this is a diagram using Hierarchy Links; it does not work if the diagram is itself an Object Visualization Diagram, which uses Association Lines.